

### Description

CD11b is a ~127 kDa member of the integrin family found on leukocytes. It has a role in adhesion of leukocytes and migration to sites of inflammatory responses. CD11b is also involved in the complement system.

### Technical Information

Antibody: Mouse monoclonal, IgG<sub>1</sub>  
 Specificity: Bovine CD11b<sup>1</sup>  
 Cross-reactivity: Not tested  
 Immunogen: NA

### Formulation and Storage

Purity: IgG purified by protein G affinity chromatography from serum-free cell culture supernatant.

Product Formulation: Lyophilized from a ≥ 1 mg/ml solution in 20 mM NaH<sub>2</sub>PO<sub>4</sub> 0.15 M NaCl, 1.0% (w/v) mannitol, pH 7.4. Concentration determined by absorbance at 280 nm using an extinction coefficient of 1.4 (ε<sub>0.1%</sub>).

Reconstitution: Reconstitute with deionized water.

Storage: Aliquot and store at -20°C for prolonged periods. Avoid freeze-thaw cycles. Alternatively add 0.02% (w/v) sodium azide and store at 4°C.

Country of Origin: Hybridoma country of origin- Kenya.  
 Subcloned and produced- USA.

Available Formats: 0.1 mg and 0.5 mg

### References

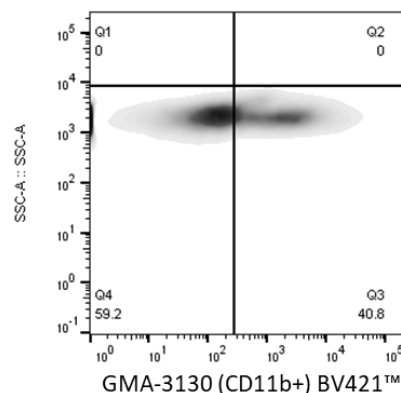
<sup>1</sup> Naessens, J., Nthyale, J.M., Muiya, P. 1996. *Vet. Immunol. Immunopathol.* 52:347-356.

### Applications

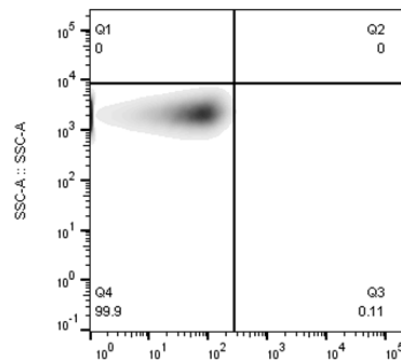
For research use only.

Flow Cytometry: Recommended concentration is 5.0 to 20 µg/mL per 1x10<sup>6</sup> PBMCs in 100 µl. Investigator should titrate for specific application.

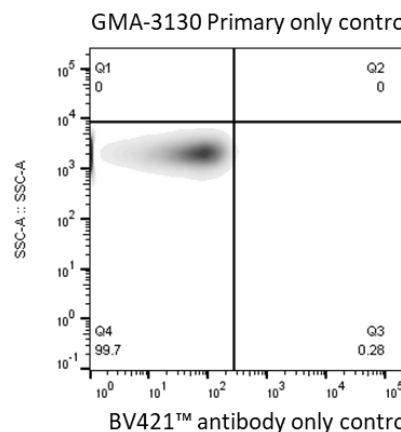
### Flow Cytometry Data



Peripheral blood was collected from a purebred Holstein cow into sodium heparin vacutainers and peripheral blood mononuclear cells (PBMCs) were isolated using Histopaque-1083.



Cells were washed in phosphate-buffered saline and 1x10<sup>6</sup> cells were stained with 4.0 µg/mL GMA-3130 and visualized with a secondary rat anti-mouse IgG<sub>1</sub> antibody conjugated to BV421™.



PBMCs were also stained with GMA-3130 or the BV421™-conjugated antibody only as negative controls. Cells were visualized and data collected using a Milltenyi VYB flow cytometer.

Data was analyzed with FlowJo® version 10.2 analysis software.